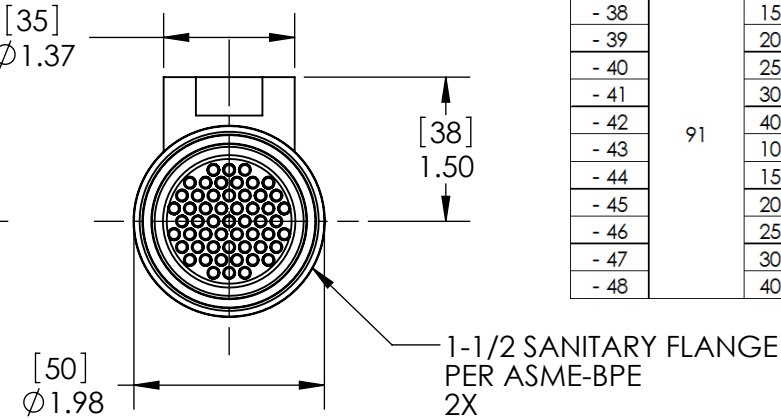
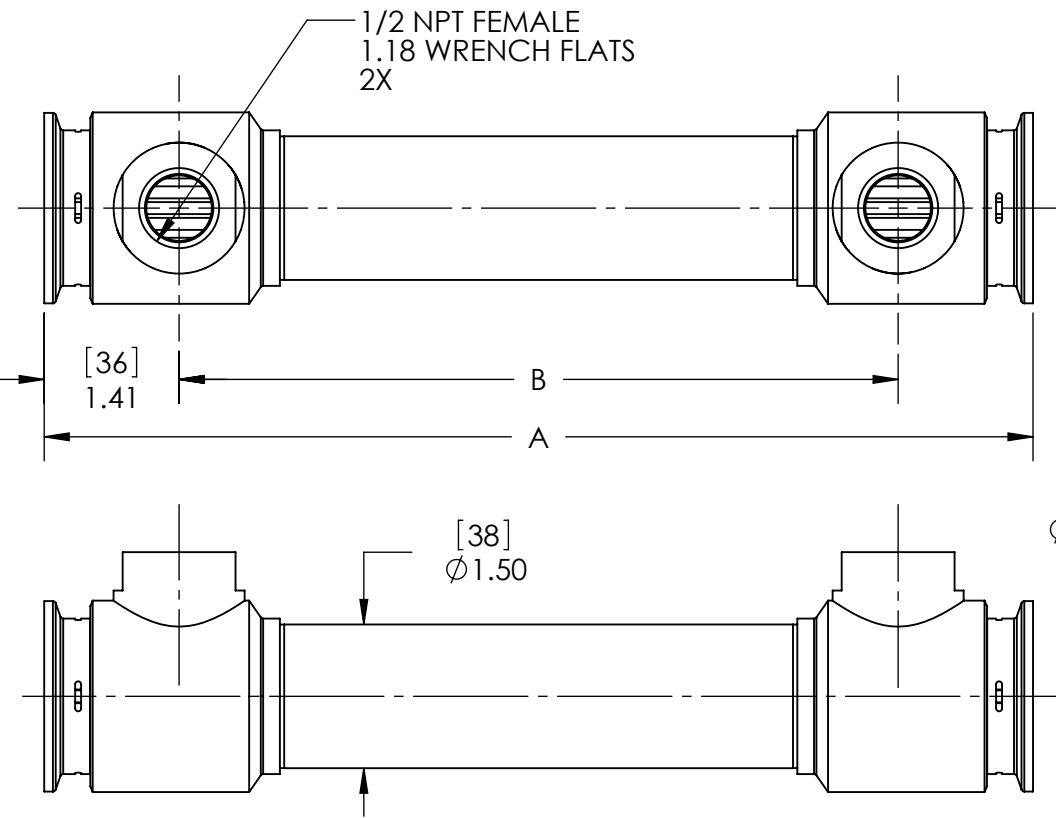


- NOTES:
- MATERIAL: 316L STAINLESS STEEL, NICKEL BRAZED.
  - PRODUCT CONTACT SURFACE FINISH CODE PER ASME-BPE:  
SF1: 20 µin. (.5 µm) Ra MAX  
SF4: 15 µin. (.4 µm) Ra MAX, ELECTROPOLISHED.
  - ALL EXTERNAL SURFACES SATIN FINISH.
  - MAXIMUM OPERATING CONDITIONS:
    - PRESSURE: TUBESIDE - 1,200 psi (83 bar)  
SHELLSIDE - 800 psi (55 bar)  
(REFER TO SANITARY CLAMP MANUFACTURER FOR CLAMP PRESSURE RATING)
    - TEMPERATURE: 800°F (425°C)
    - PRESSURE FOR STEAM SERVICE: 125 psi (8.6 bar)
    - FLUID TEMPERATURE DIFFERENCE:  
(THOT)AVE - (TCOLD)AVE ≤125°F (70°C)
  - FULLY DRAINABLE ON TUBESIDE.
  - MATERIAL AND PROCESS CERTIFICATIONS PROVIDED.



- #	TUBE COUNT	TUBE LENGTH		CONFIG.	PRODUCT CONTACT SURFACE FINISH (NOTE 2)	DIM A		DIM B		WEIGHT EMPTY		TRANSFER AREA	
		in	mm			in	mm	in	mm	lb	kg	ft²	m²
- 01	55	10.00	254	V	SF4	10.30	262	7.50	191	3.57	1.6	1.33	0.12
- 02		15.00	381			15.30	389	12.50	318	4.34	2.0	2.08	0.19
- 03		20.00	508			20.30	516	17.50	445	5.12	2.3	2.83	0.26
- 04		25.00	635			25.30	643	22.50	572	5.90	2.7	3.58	0.33
- 05		30.00	762			30.30	770	27.50	699	6.68	3.0	4.33	0.40
- 06		40.00	1016			40.30	1024	37.50	953	8.23	3.7	6.00	0.56
- 07		10.00	254		SF1	10.30	262	7.50	191	3.57	1.6	1.33	0.12
- 08		15.00	381			15.30	389	12.50	318	4.34	2.0	2.08	0.19
- 09		20.00	508			20.30	516	17.50	445	5.12	2.3	2.83	0.26
- 10		25.00	635			25.30	643	22.50	572	5.90	2.7	3.58	0.33
- 11		30.00	762			30.30	770	27.50	699	6.68	3.0	4.33	0.40
- 12		40.00	1016			40.30	1024	37.50	953	8.23	3.7	6.00	0.56
- 13	91	10.00	254	V	SF4	10.30	262	7.50	191	3.57	1.6	1.66	0.15
- 14		15.00	381			15.30	389	12.50	318	4.35	2.0	2.59	0.24
- 15		20.00	508			20.30	516	17.50	445	5.12	2.3	3.52	0.33
- 16		25.00	635			25.30	643	22.50	572	5.89	2.7	4.46	0.41
- 17		30.00	762			30.30	770	27.50	699	6.66	3.0	5.39	0.50
- 18		40.00	1016			40.30	1024	37.50	953	8.21	3.7	7.47	0.69
- 19		10.00	254		SF1	10.30	262	7.50	191	3.57	1.6	1.66	0.15
- 20		15.00	381			15.30	389	12.50	318	4.35	2.0	2.59	0.24
- 21		20.00	508			20.30	516	17.50	445	5.12	2.3	3.52	0.33
- 22		25.00	635			25.30	643	22.50	572	5.89	2.7	4.46	0.41
- 23		30.00	762			30.30	770	27.50	699	6.66	3.0	5.39	0.50
- 24		40.00	1016			40.30	1024	37.50	953	8.21	3.7	7.47	0.69
- 25	55	10.00	254	W	SF4	10.30	262	7.50	191	3.57	1.6	1.33	0.12
- 26		15.00	381			15.30	389	12.50	318	4.34	2.0	2.08	0.19
- 27		20.00	508			20.30	516	17.50	445	5.12	2.3	2.83	0.26
- 28		25.00	635			25.30	643	22.50	572	5.90	2.7	3.58	0.33
- 29		30.00	762			30.30	770	27.50	699	6.68	3.0	4.33	0.40
- 30		40.00	1016			40.30	1024	37.50	953	8.23	3.7	6.00	0.56
- 31		10.00	254		SF1	10.30	262	7.50	191	3.57	1.6	1.33	0.12
- 32		15.00	381			15.30	389	12.50	318	4.34	2.0	2.08	0.19
- 33		20.00	508			20.30	516	17.50	445	5.12	2.3	2.83	0.26
- 34		25.00	635			25.30	643	22.50	572	5.90	2.7	3.58	0.33
- 35		30.00	762			30.30	770	27.50	699	6.68	3.0	4.33	0.40
- 36		40.00	1016			40.30	1024	37.50	953	8.23	3.7	6.00	0.56
- 37	91	10.00	254	W	SF4	10.30	262	7.50	191	3.57	1.6	1.66	0.15
- 38		15.00	381			15.30	389	12.50	318	4.35	2.0	2.59	0.24
- 39		20.00	508			20.30	516	17.50	445	5.12	2.3	3.52	0.33
- 40		25.00	635			25.30	643	22.50	572	5.89	2.7	4.46	0.41
- 41		30.00	762			30.30	770	27.50	699	6.66	3.0	5.39	0.50
- 42		40.00	1016			40.30	1024	37.50	953	8.21	3.7	7.47	0.69
- 43		10.00	254		SF1	10.30	262	7.50	191	3.57	1.6	1.66	0.15
- 44		15.00	381			15.30	389	12.50	318	4.35	2.0	2.59	0.24
- 45		20.00	508			20.30	516	17.50	445	5.12	2.3	3.52	0.33
- 46		25.00	635			25.30	643	22.50	572	5.89	2.7	4.46	0.41
- 47		30.00	762			30.30	770	27.50	699	6.66	3.0	5.39	0.50
- 48		40.00	1016			40.30	1024	37.50	953	8.21	3.7	7.47	0.69

ALL DIMENSIONS ARE IN INCHES [mm]

**PROPRIETARY AND CONFIDENTIAL**

THE INFORMATION CONTAINED IN THIS DOCUMENT IS THE SOLE PROPERTY OF EXERGY, LLC. ANY REPRODUCTION, DISCLOSURE, OR USE, IN PART OR AS A WHOLE, WITHOUT THE WRITTEN PERMISSION OF EXERGY, LLC IS PROHIBITED.

PRODUCT SPECIFICATIONS SUBJECT TO CHANGE WITHOUT NOTICE. MANUFACTURER ASSUMES NO LIABILITY FOR MISUSE OR ABUSE OF PRODUCT. SPECIFIC WARRANTY INFORMATION IS AVAILABLE UPON REQUEST.

**THIRD ANGLE PROJECTION**

**ExERGY**  
HEAT TRANSFER SOLUTIONS

320 ENDO BLVD.  
GARDEN CITY, NY 11530  
USA (516)832-9300  
www.exergyllc.com

**SHELL & TUBE HEAT EXCHANGER**  
**35 SERIES SANITARY**  
**DTS, 1/2 NPT, RUGGED, HiP CLAMP**

MODEL NO. **04746 - #**

DATE **9/30/2021** SCALE **1:2** SHEET **1 OF 1**

MODEL NO. 04746 - #

V - CONFIGURATION

W - CONFIGURATION

MOUNTING KIT:  
• MODEL 00421-03